

Racer's Retreat

Pella, Iowa Vacation Getaway

Charlie & Lori Cutter's Home
 1030 Lakeview Drive
 Pella, Iowa 50219
 (641) 672-RACE (7223)

Brand New Construction - March 2021

1,700 sq ft Basement Retreat

Separate Side Entrance - Coded Entry

Serene Country-like Setting
 Patio backs to pond with fountains
 Breathtaking Sunsets!

1.5 miles to Pella Square
 17 miles from Knoxville Raceway

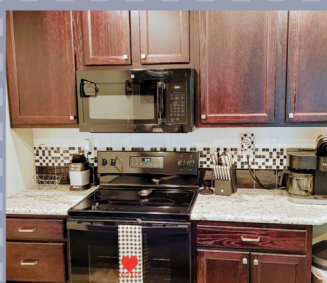
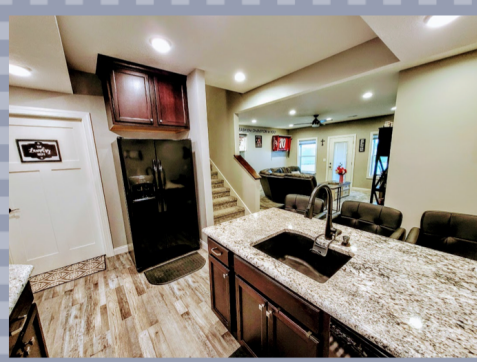


*Race theme decor throughout
 using sprint car parts for accessories!*

RETREAT FEATURES:

- Welcome board & guest book
- Complimentary guest WiFi
- Great Room
 - Reclining sectional sofa
 - Popup accent table for dining
 - Electric fireplace TV stand
 - 65" WiFi smart TV
 - Ceiling fan/light w/remote
 - Color printer/scanner
 - Board games, cards and books
 - Pull down/push up room darkening blind
- Sleeps 4 - 8 depending on guests
 - Master King Suite - Sleeps 2
 - Queen Bed - Room #2 - Sleeps 2
 - Twin Bunk/Dbl Bed - Room #3 - Sleeps 2-3
 - QN Airbed fits in Bunk Room - Sleeps 1-2
 - Hideaway room under stairs - could sleep toddler
- Laundry Room
 - Features (2) washers, (1) dedicated to muddy fire suits and crew wear; (1) dryer
 - Starter detergent pods & degreaser
 - Vacuum & mop





**Fully furnished
Kitchen**

KITCHEN FEATURES :

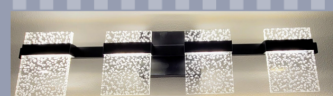
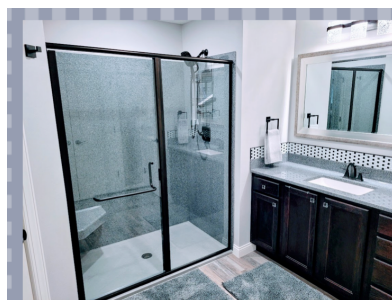
- Granite counters and checkered backsplash tile work
- Island counter w/eating area
- Fully furnished kitchen w/pots, pans, dishes, silverware and plasticware
- Serving bowls and utensils
- Frigidaire side-by-side freezer/fridge with water and ice in the door
- GE full-size electric oven with (4) electric cooktop burners
- GE microwave; GE dishwasher
- Single sink w/disposal
- Keurig coffee maker w/pods or 12 cup coffee pot
- Toaster oven & 4 slice toaster
- Crockpot
- Ninja blender w/travel cups
- Starter coffee pods, tea bags & spices
- Starter dishwasher pods & cleaning supplies



**Master King Suite
2 Night Stands
Dresser & Mirror**

MASTER BEDROOM SUITE FEATURES :

- Serene view of pond
- King platform bed with storage drawers
- Memory foam mattress pad & cover
- Hypoallergenic pillows and bedding
- 6-drawer dresser w/mirror
- (2) night stands w/lamps
- (2) multi-plug extension cords
- Alarm clock & portable heater
- Ceiling fan/light w/remote
- Inspiring decor and wall art
- Floor lamp
- Pull down/push up room darkening blind
- Gray carpet with luxury padding



**Master Suite
Bathroom**



MASTER BATH SUITE FEATURES :

- Extra large single sink vanity w/lots of storage
- Walk-in onyx shower w/corner seat and glass shower door
- Adjustable and detachable hand-held shower head
- Separate toilet room
- Towel bars made from sprint car radius rods
- Blow dryer, makeup mirror, scale
- Black/white checked backsplash & vanity lighting
- Inside cabinet storage hangers
- Walk-in closet with hangers
- Linen closet w/ various linens
- Starter set of shampoo, conditioner and bath soap
- Gray wood-like vinyl plank flooring



**Bedroom #2
Queen Bed
Dresser & Mirror**

BEDROOM #2 FEATURES :

- Serene view of pond
- Queen bed w/memory foam padding
- Dresser & mirror w/(2) nightstands
- Table lamp w/Black/white checkered shade
- Sprint car themed quilt w/buffalo checked blanket
- Hypoallergenic pillows and bedding
- Extra blankets for chilly nights
- (2) multi-plug extension cords
- Ceiling fan/light w/remote
- Large closet with hangers
- Alarm clock
- Gray carpet with luxury padding
- Pull down/push up room darkening blind



**Bedroom #3 - Twin Bunk
over Dbl Bed**

BEDROOM #3 FEATURES :

- Serene view of pond
- Twin bunk bed over double bed
- Staircase to top bunk w/storage drawers
- Queen Airbed in bag if needed for extra guest
- (1) nightstand
- Table lamp w/Black/white checkered shade
- Sprint car themed quilt w/buffalo checked blanket
- Custom designed Knoxville Raceway sprint cars ceiling fan/light w/remote
- Custom paint - red 1/2 wall with checkered border
- Hypoallergenic pillows and bedding
- Extra blankets for chilly nights
- Large closet with hangers
- Pull down/push up room darkening blind
- Gray carpet with luxury padding

HALL BATH FEATURES :

- Extra large double sink vanity w/lots of storage
- Extra deep soaking tub w/shower & curtain
- Adjustable and detachable hand-held shower head
- Separate toilet room
- Towel bars made from sprint car radius rods
- Hand towel ring decorated w/sprint car decor
- Checkered mother of pearl cabinet knobs
- Black/white backsplash & vanity lighting
- Blow dryer
- Inside cabinet storage hangers
- Linen closet w/ various linens
- Starter set of shampoo, conditioner and bath soap
- Gray wood-like vinyl plank flooring



**Hall Bathroom
Serves Bedroom #2 & #3**

Find us at:
<http://www.championracepromotions.com/racersretreat>

THINGS TO KNOW

- Custom built home - with Racer's Retreat basement built for race teams and fans in mind
- Located in the development of Fountain Hills on cul-de-sac; 1.5 miles from downtown Pella
- **NO SMOKING! NO PETS! NO DRUG USE!**
- Property is **NOT** handicap accessible or ADA friendly
- Minimum (2) night stay - Maximum (30) day stay
- Pricing varies and is based on surrounding area seasonal accommodation rates
- Guests must sign and agree to rental agreement terms and conditions at booking
- Credit card collected at time of booking for incidentals or damages
- \$75.00 non-refundable cleaning/readiness fee per stay
- (1) Parking spot in driveway and (1) spot in front of home
- Possible side street parking for guests with haulers; request at time of booking
- HVAC available, runs on whole house unit with separate thermostat
- Whole house water filtration system - purified water from every faucet
- Both covered and open patio via back door ; private propane BBQ
- Patio set with table and chairs
- Complimentary grocery pickup is available by ordering with Hy-Vee, Fareway or Walmart

ABOUT THE OWNERS - Charlie & Lori Cutter

- Lori has a passion for hospitality and making guests feel extra special. You will feel pampered and spoiled as a guest of the Cutter's.
- Lori was born and raised in circle track racing, mainly dirt sprint cars and midgets, with some NASCAR roots. She is an accredited journalist with the National Motorsports Press Association and wrote for SpeedSport News for many years and serves on pit crews.
- Lori is the owner of Champion Race Promotions where she works with race teams and business owners in event planning and elevating PR. She is also a member of the Pella PACE Alliance (Chamber of Commerce).
- Charlie is a 42 year career corporate pilot with NWA/Delta Airlines. He is retiring in Sept. 2021.
- Charlie is a part-time fireman for the City of Knoxville, IA and is full-time Fire Rescue for Knoxville Raceway.
- Charlie is a professional medical ski patroller and has served the Women's Downhill skiers at several Olympic Games and annually at Women's World Cup in Canada.



ABOUT PELLA, IOWA

- America's Dutch Treasure! From museums, to stunning gardens, great shopping and abundant recreation at Lake Red Rock, you are sure to enjoy your visit.
- Lake Red Rock - Iowa's largest reservoir with camping.
- Klokkenspel - Eight four-foot mechanical figures perform at regular intervals to the music of a 147-bell carillon.
- Jaarsma Bakery - specializing in Dutch pastries, made from scratch, no preservatives. Dutch imported foods & gifts.
- Molengracht Plaza - Waterway and working drawbridge surrounded by beautiful Dutch architecture.
- Bos Landen Golf Course - The 18-hole championship public course was designed by well-known architect Dick Phelps.
- Volksweg Trail - Volksweg is a Dutch word meaning "people's path." A 12.5-mile trek, sticks mainly to rolling hills and scenic viewpoints from Lake Red Rock all the way to town.

Experience
the Spirit of Pella!
Things to see and do
minutes away from
the Knoxville Raceway!